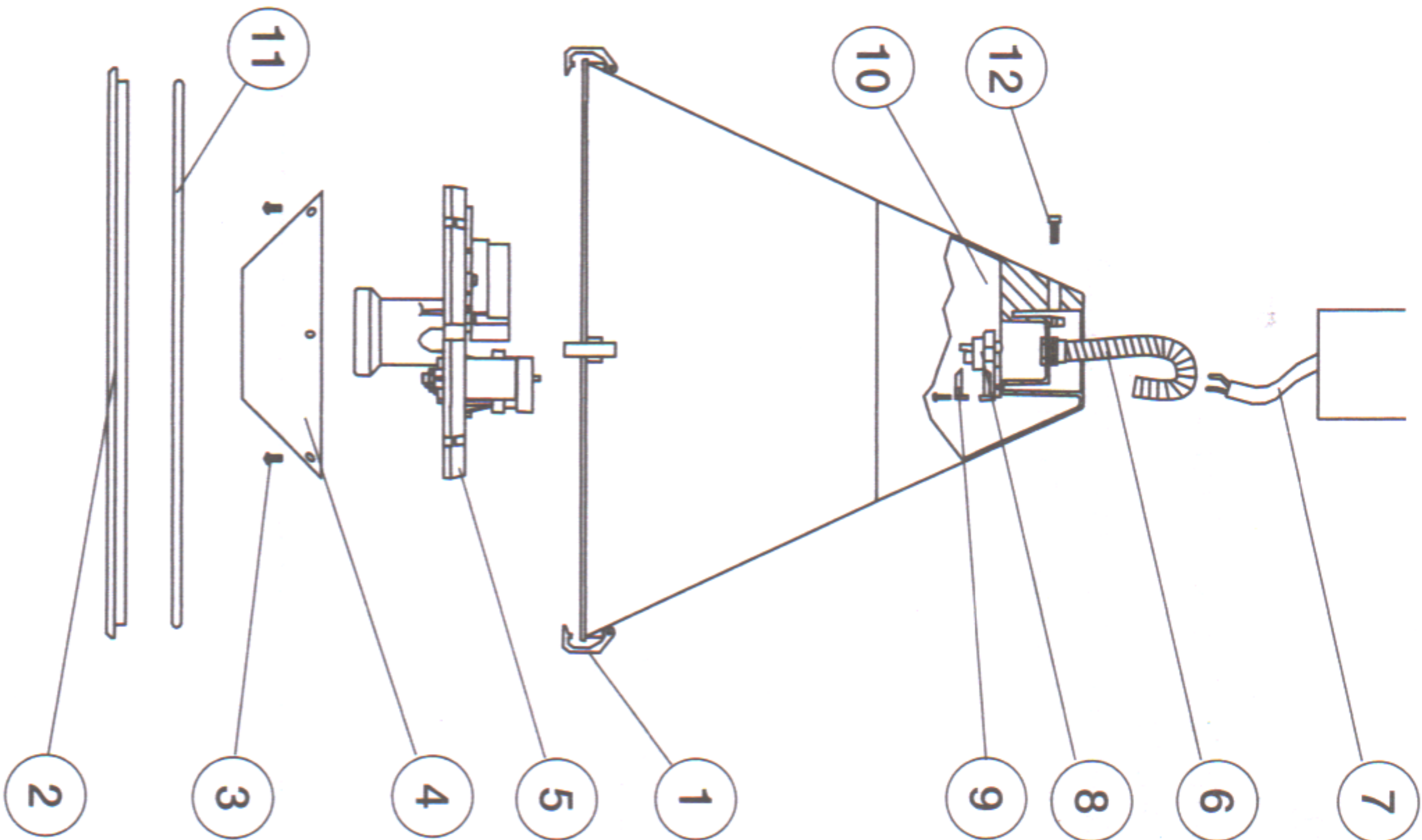


- CLEAN THE FITTING PERIODICALLY TO REMOVE POSSIBLE DIRT DEPOSITS ON THE LUMINAIRE.
- DO NOT USE HARSH DETERGENTS TO CLEAN THE LUMINAIRE.
- CHECK THE TIGHTNESS OF THE SCREWS SECURING THE LUMINAIRE TO ITS SUPPORT.
- CHECK THE INTEGRITY OF THE COMPONENTS AND REPLACE THEM IN CASE OF ANY DAMAGE BY USING ORIGINAL MARECO LUCE SPARE PARTS.

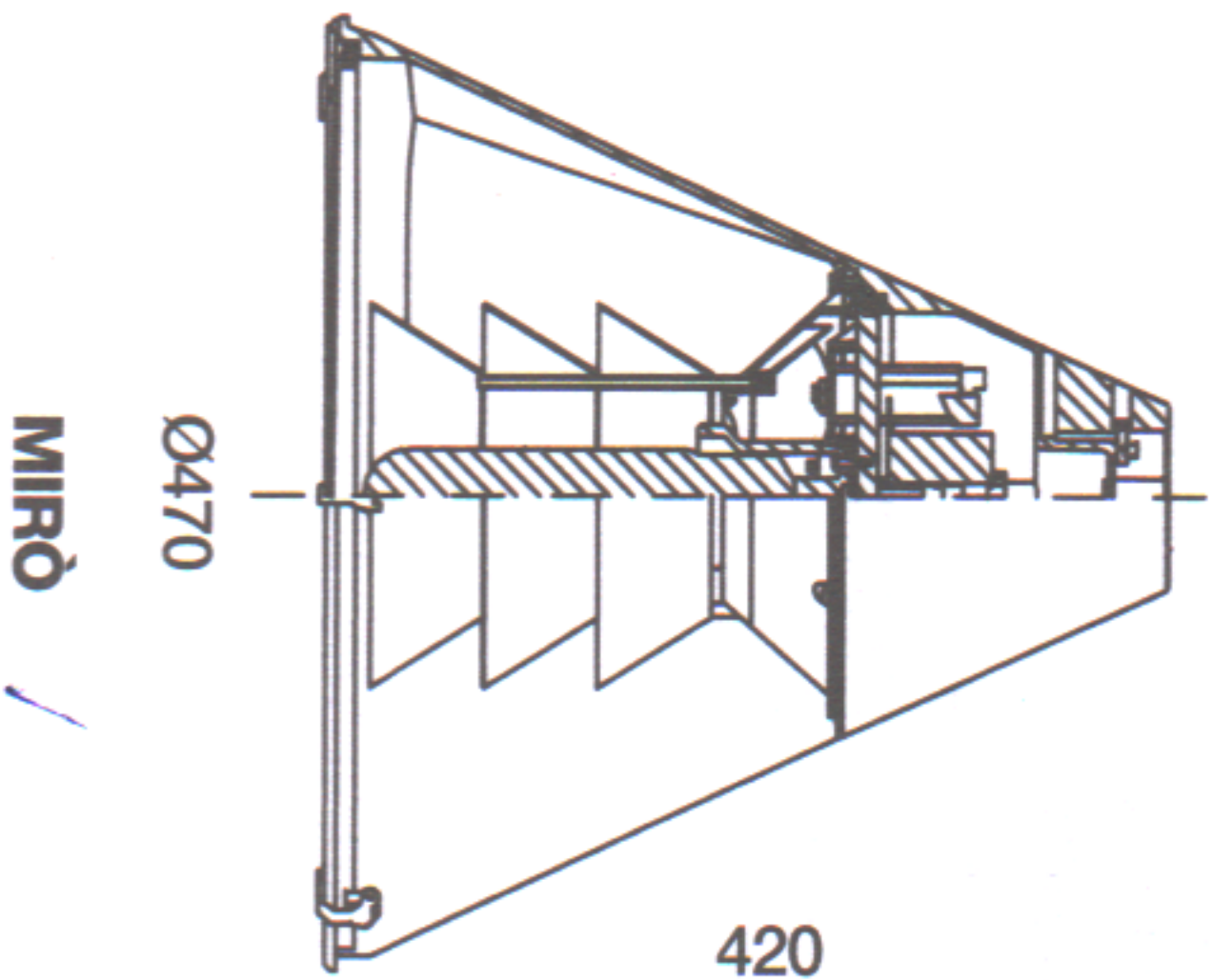
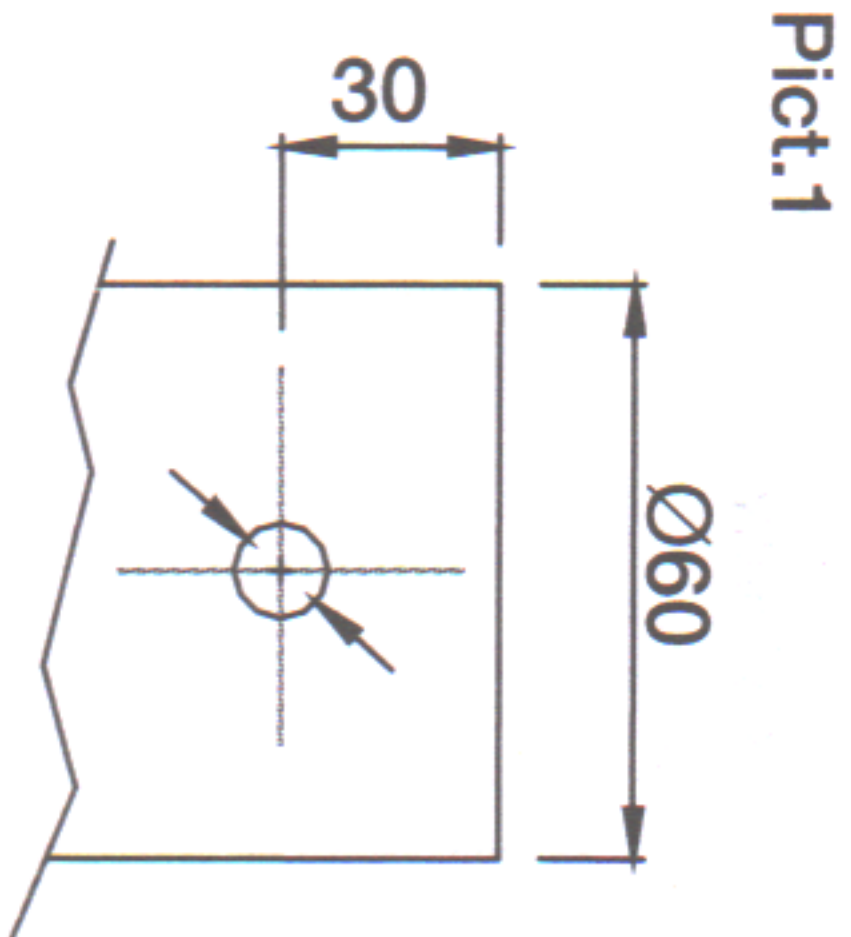
BARCELLONA

BARRIO



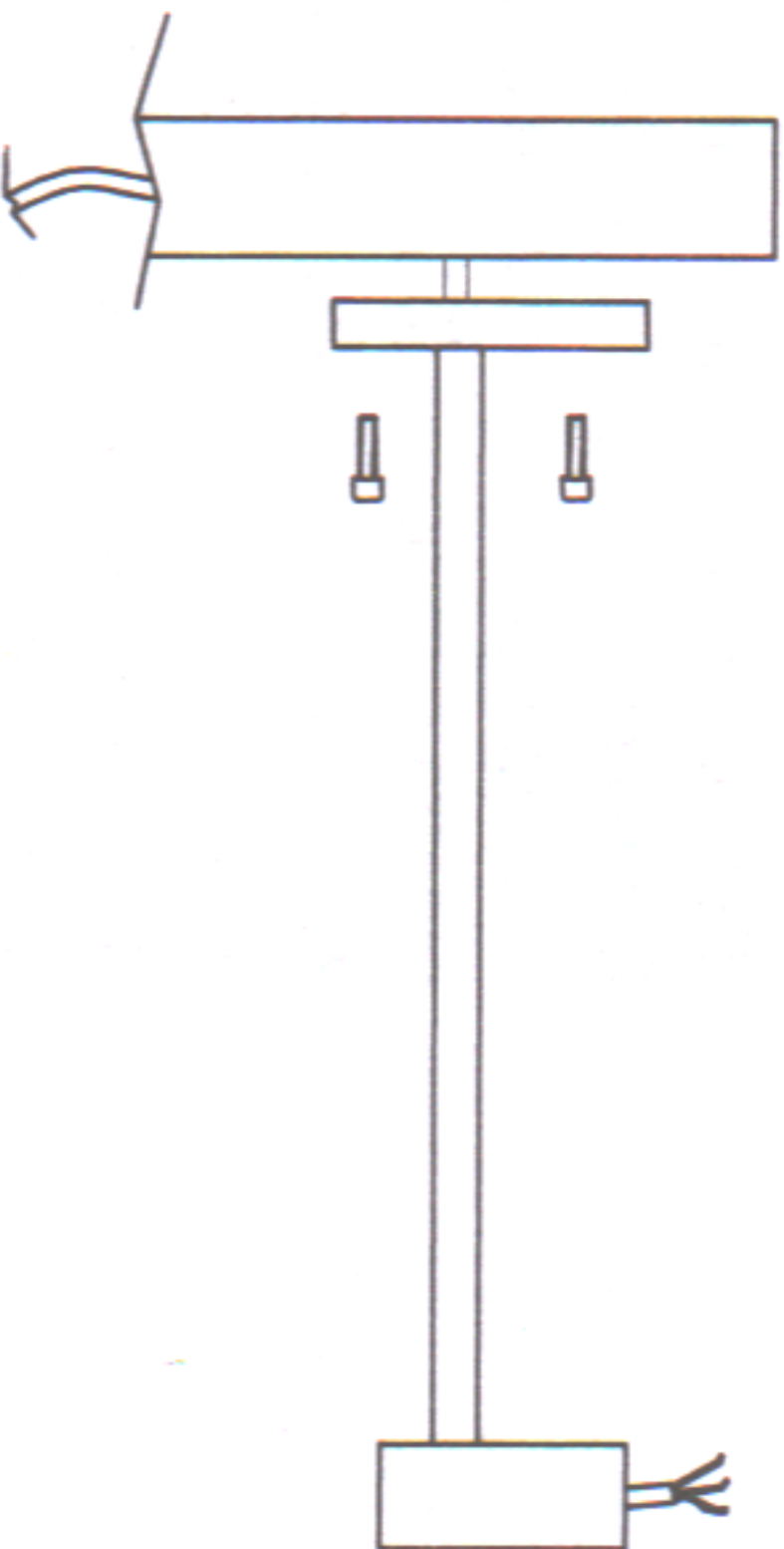
INSTALLATION INSTRUCTIONS MIRO³:

1. Unhook the closing clips of the diffuser (1) and remove the diffuser (2).
 2. Untighten the screws (3) and remove the cone (4).
 3. Remove the wiring-holder plate (5) by using the holes.
 4. Insert the supply cable through the sheath (6).
- CAUTION:** use only a flexible double insulation sheath (type HAR), suitable for outdoor use. The diameter of the inner electrical wires must range between 1 and 2.5mmq
5. Connect the supply cable (7) to the terminal block of the disconnecting switch (9) and fix it on the cable clamp (8).
 6. Insert the wiring holder plate (5) on the base (10) by ensuring that the shaft on the base matches the hole on the wiring plate (5).
 7. Insert the cones (4) (complete with antiglare louver where needed) and tighten the screws (3).
 8. Insert the lamp (not included).
 9. Pay attention to position the gasket properly (11) in the seat of the diffuser (2), and hook the clips (1).
 10. Fold the sheath (6) and insert it in the bracket top as indicated in the picture to preserve the declared IP rate.
 11. If not present, drill a hole on the bracket top as indicated in Pict. 1; insert the fitting and tighten the screws (12). One of the screws must be inserted in the hole.

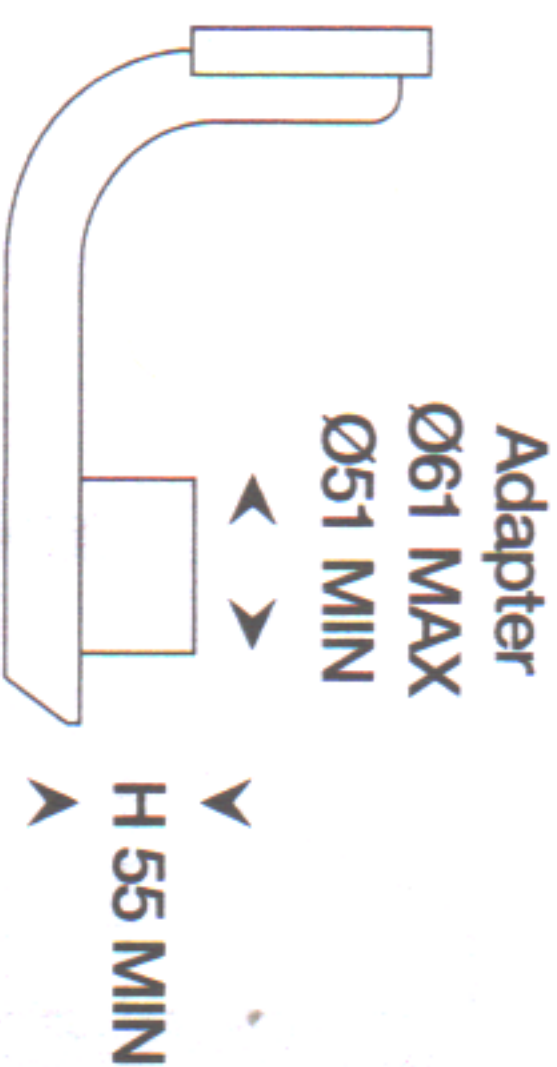


INSTRUCTIONS FOR BRACKET MOUNTING:

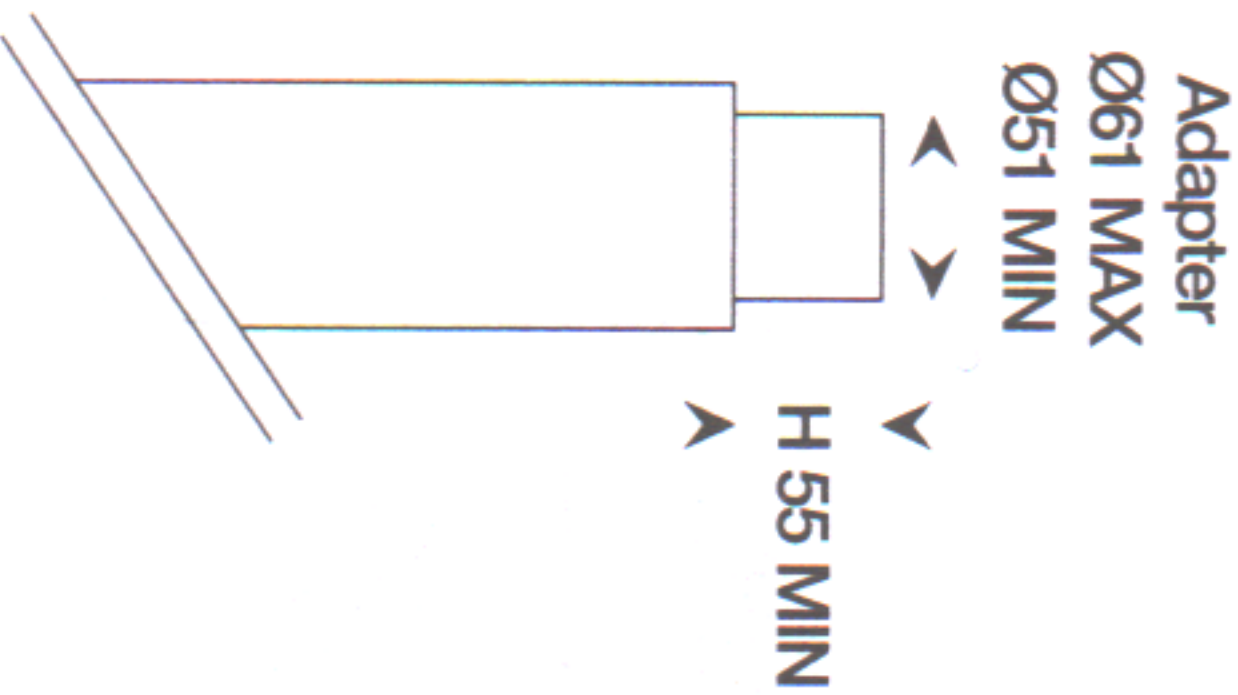
1. Insert the supply cable into the bracket through the hole
2. Proceed with installing the fitting by following the instructions
3. Fix the bracket on the pole or on the wall, depending on the model. For the pole version, use the supplied screws, for the wall-mounted version use the screws and expansion caps (not included) according to the type of installation surface.



Installation on brackets



Installation on poles



Measures expressed in mm